



August 22, 2022

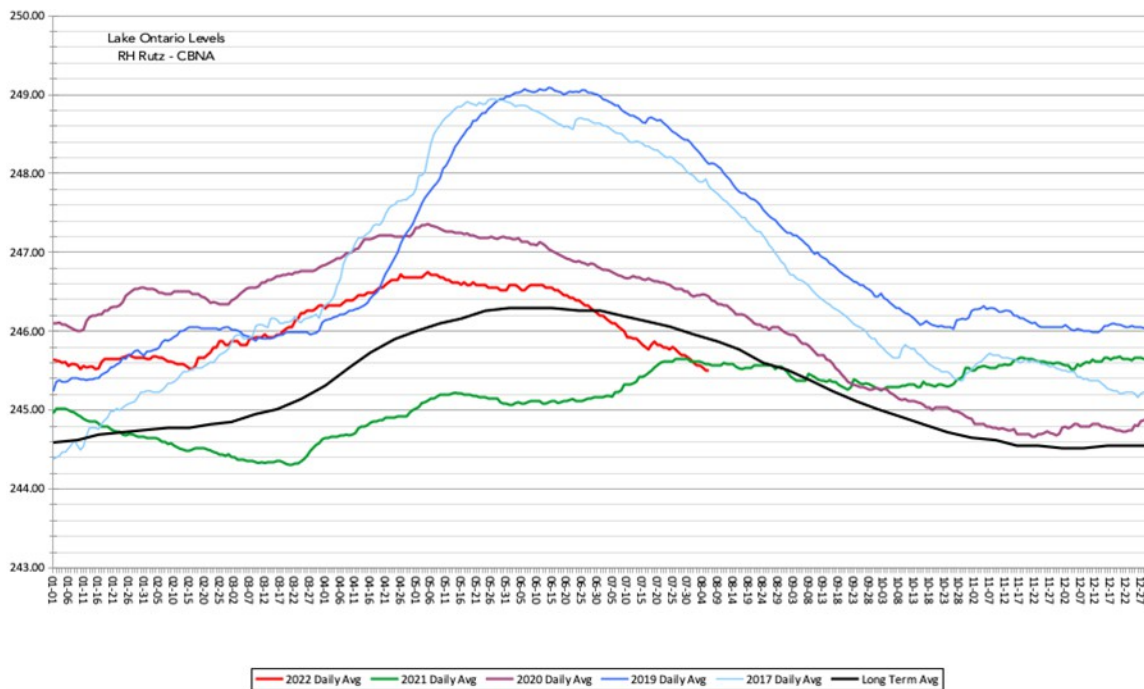
Lake Ontario St. Lawrence River Alliance

1670 Edgemere Drive

Rochester, New York 14612

Dear LOSLRA members and Waterfront Residents,

Aided by a hot and dry Summer, Lake Ontario and the upper St. Lawrence River water levels continue to drop rapidly. While many of us shoreline residents appreciate the below average water levels, the Marinas and recreational boaters may have to end their seasons early due to shallow conditions. **So why is Plan 2014 setting high outflows during these dryer than average conditions? Learn more in this month's attached newsletter.** Also, learn about our meeting with Senator Schumer, and his support for low interest loans to help rebuild from high water damage.





Dear LOSLRA members and shoreline residents,

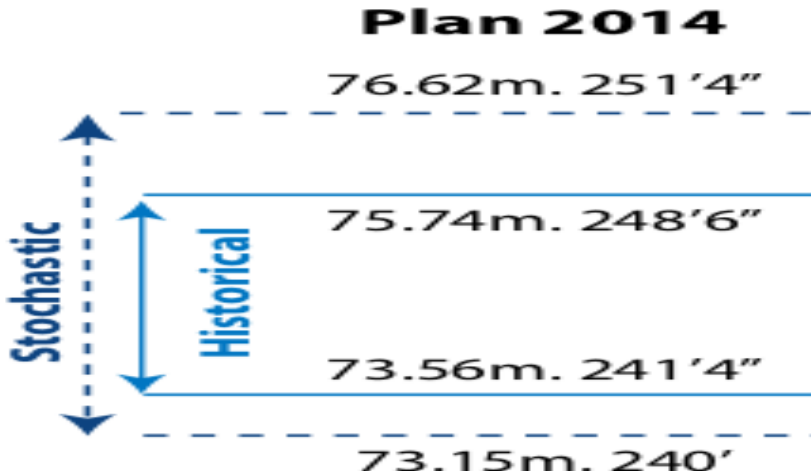
This past month, Doug Dobson, LOSLRA vice president, and John Bolton, LOSLRA president, had the opportunity to meet NY Senator Pam Helming and US Senate Majority Leader Chuck Schumer for the roll out of the Storm Act. This Act establishes the resilient New York revolving loan program and the resilient New York revolving loan fund to provide low or no-interest loans to municipalities, not-for-profit organizations, and individual property owners for hazard mitigation and resilience projects; provides funding from federal STORM Act. Schumer says FEMA still needs to finalize its regulations, which will give the green light to release the money. It will work as a revolving loan fund that homeowners or businesses can apply for.



From right to left: Wayne County Board of Supervisors Phillip Eynor, US Senator Chuck Schumer, NYS Senator Pam Helming, NY Assemblyman Brian Manktelow, LOSLRA President John Bolton

**So why is the IJC letting out above average flows from Lake Ontario despite extremely dry conditions?**

Plan 2014’s algorithm to determine outflow rates is based, in part, on a 52 week look back. Since flows were above average last year, Plan 2014 is over compensating outflows now based on last year’s data. In addition, Plan 2014 has provisions to protect shipping from low water levels and high velocities in the St. Lawrence River. This is referred to as the ‘L’ limit. The previous regulation plan for Lake Ontario was Plan 1958DD. The previous plan had a much shorter look back with more human intervention to adjust to weather pattern changes. Please note, from the graph below, the wider water level range of Plan 2014 as compared to Plan 1958DD. Lets hope and pray we never see these Plan 2014 extremes!



**The mission of our LOSLRA organization is to fight for your riparian rights. We are insisting that Plan 2014 be modified to reduce these huge lake level variations that impact both shoreline owners and recreational boating.**

**Please visit [LOSLRA.org](http://LOSLRA.org). We need your continued support through membership/donations.**

Respectfully,

John Bolton, President

Doug Dobson, Vice President

Tim Donlon, Treasurer

Jack Wade. Secretary